

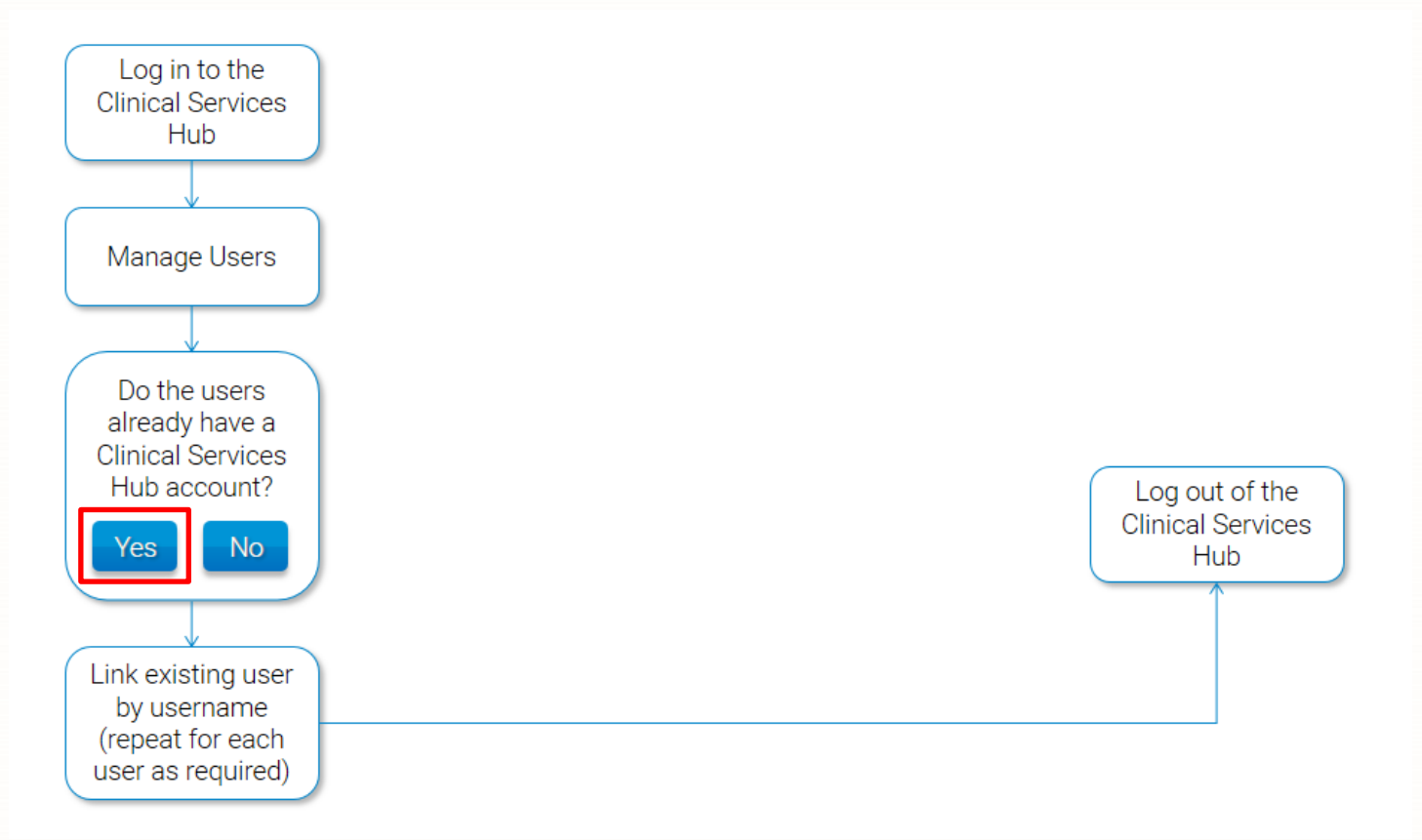
Managing Users on the Clinical Services Hub (Superintendent)

We have outlined the recommended workflow for superintendents to use when managing users on the Clinical Services Hub. Use the workflow below to determine the steps you need to follow to add and link users to your organization.

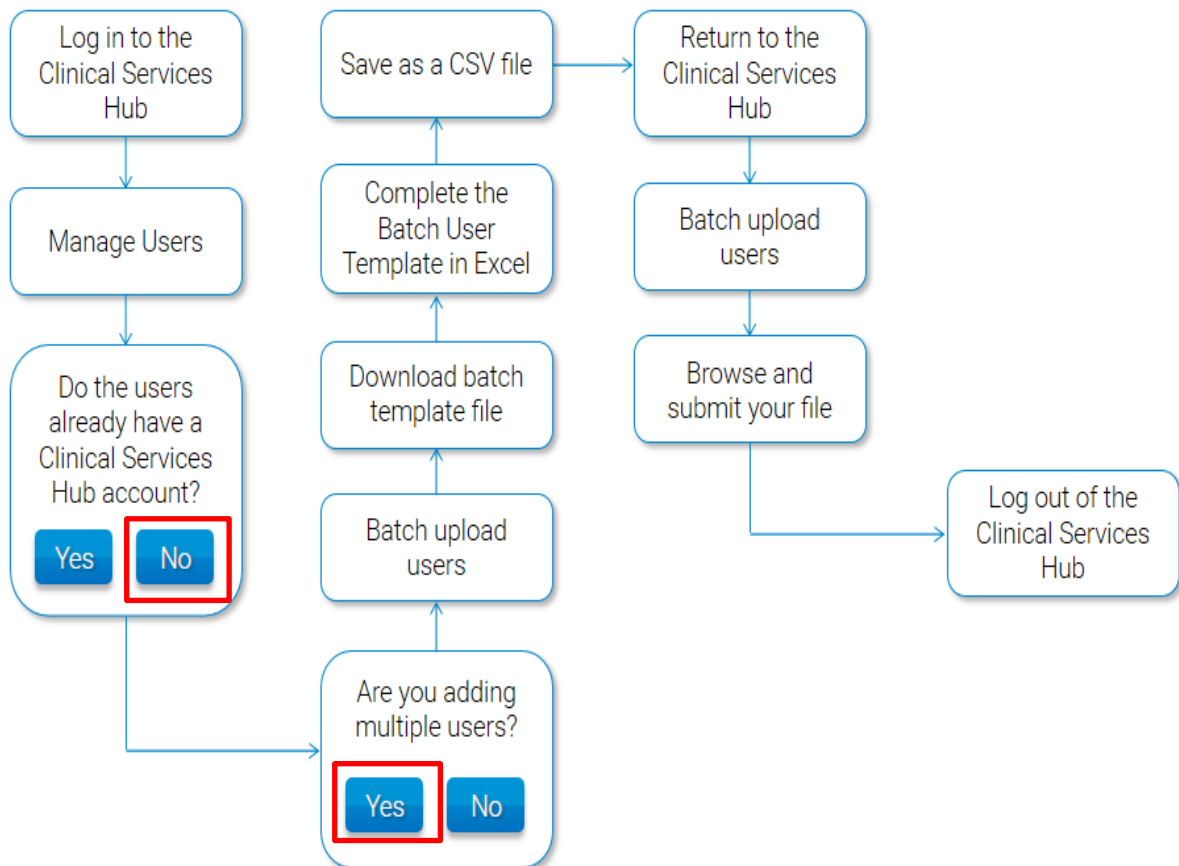
To follow detailed step-by-step processes on how to manage users, see our [Managing Users at your Organization](#) article.

You can find related articles for further guidance on the [Patient Group Directions](#) hub.

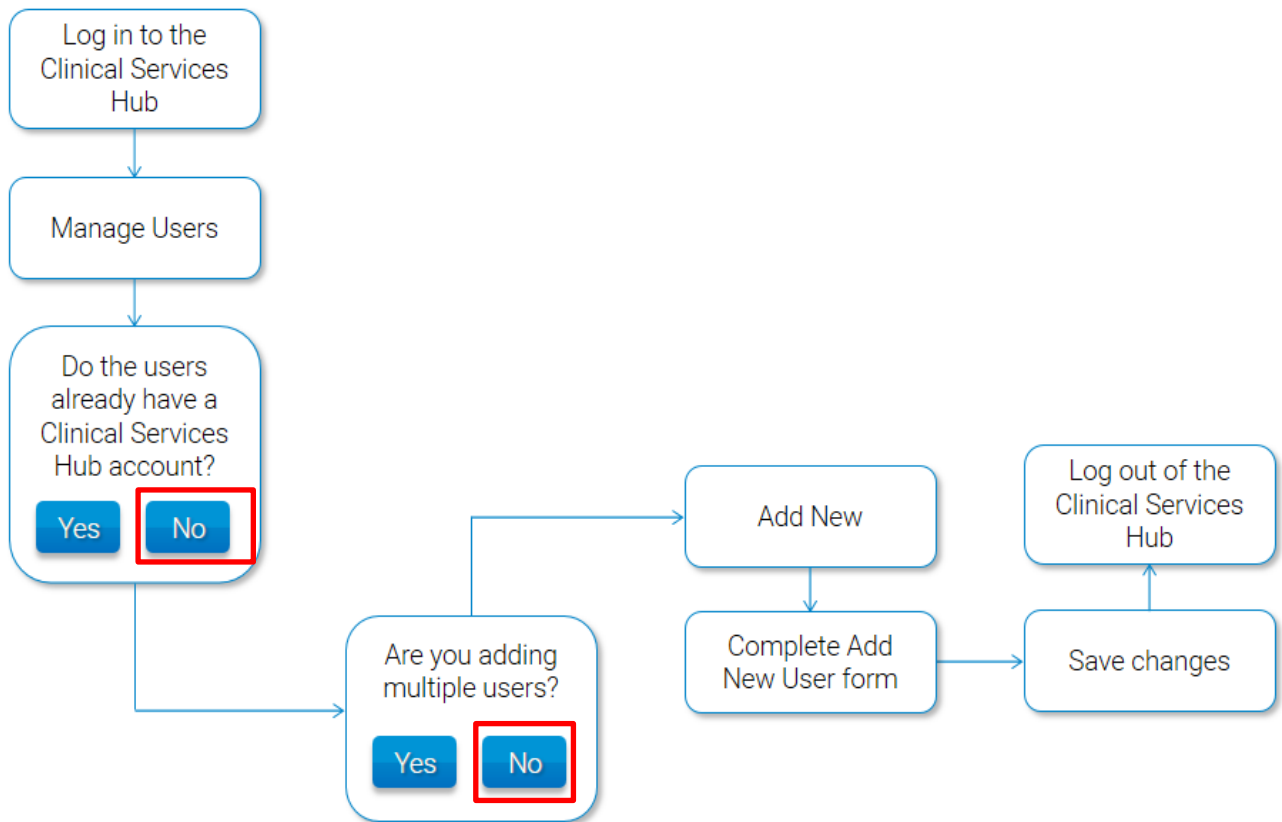
IF YES



IF NO and YES to Multiple Users



IF NO and NO to Multiple Users



Revision History

Version Number	Date	Revision Details	Author(s)
1.0	10 November 2020		Elyas Khalifa

Contact us

For more information contact:
Telephone: 0344 209 2601